

# USGBoral Access Panel

USGBoral Access panel is a low cost, simple to install product that provides sublime finish and saves a lot of time



Traditional way of Access Panel



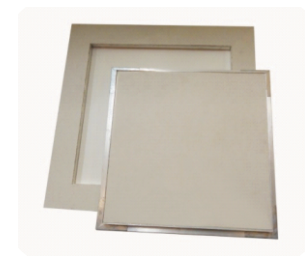
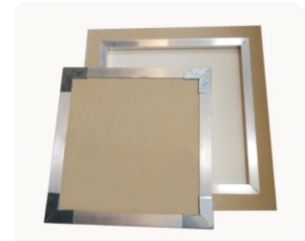
Access Panel

## Characteristics

- Ease of Application
- Better finish
- Time saving
- High Durability
- Made of Gypsum board
- Can be painted
- Customized sizes

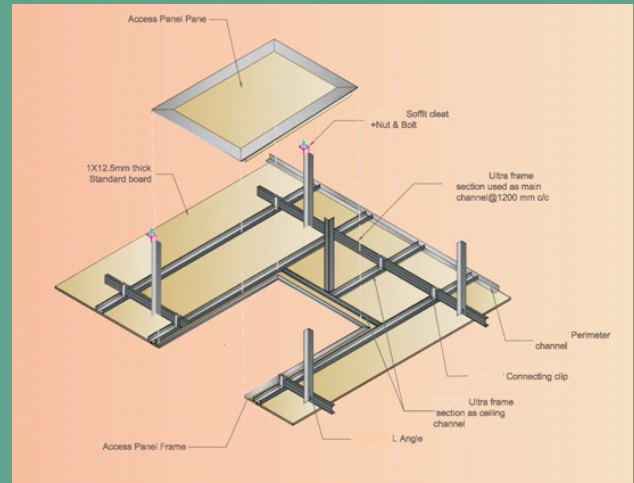
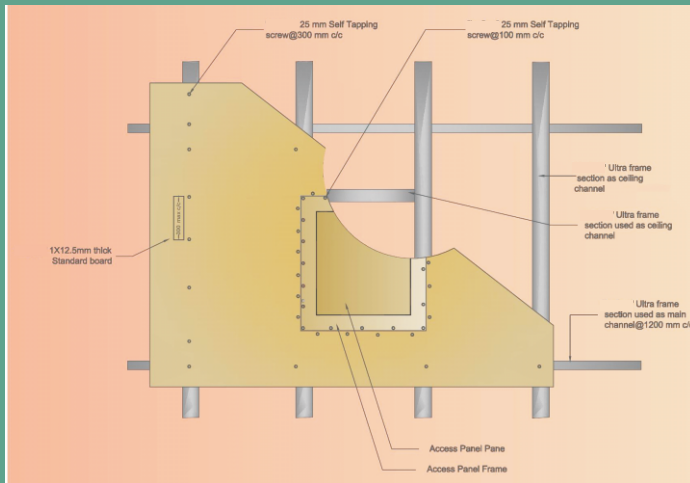
Access Panels are commonly used in areas where access to stop cocks, pipes, electrical cables and other utilities is required while at the same time concealing them. Though traditional methods of making an access panel on site serves the basic utility, they end up consuming a lot of time in installation and are not quite up to the mark when it comes to finishing.

With Access Panel, no longer one needs to compromise with the aesthetics or depend upon a third party workman or carpenter. It can be installed by anyone who is skilled enough to install a gypsum ceiling. Its unique design offers a sublime finish; simultaneously it saves a lot of time as it is a ready to install product. All edges of the panel are reinforced with aluminium profiles and all the corners are reinforced with stainless steel to increase strength and prevent damages, thus making it a highly durable solution.



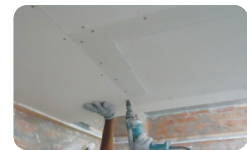
# USGBoral Access Panel

## Installation Details



## Installation Details

- 1 After determining and marking the right position, install Ultraframe Ceiling Metal section in square shape with same dimension (center-to-center) as the selected Access Panel frame size
- 2 Add additional L-angles for extra strength
- 3 Fix the Access Panel Frame to the Ultraframe Ceiling Metal Section with screws at every 100 mm along the frame
- 4 Install Gypsum Board around the frame and lay the Access Panel pane on the frame
- 5 Seal the joints with jointing tape and coat the joint with EasyJoint compound
- 6 Apply paint or other surface finishes together with the ceiling.



Use Access Panel manufactured from Standard Gypsum Board or use MoistBloc (for Moisture resistance) applicable with 12.5 mm concealed ceiling without visible joints and frames.

Installed with Ultraframe metal section, produced from 0.55 mm thickness, high quality hot-dip galvanized steel, with propriety accessories